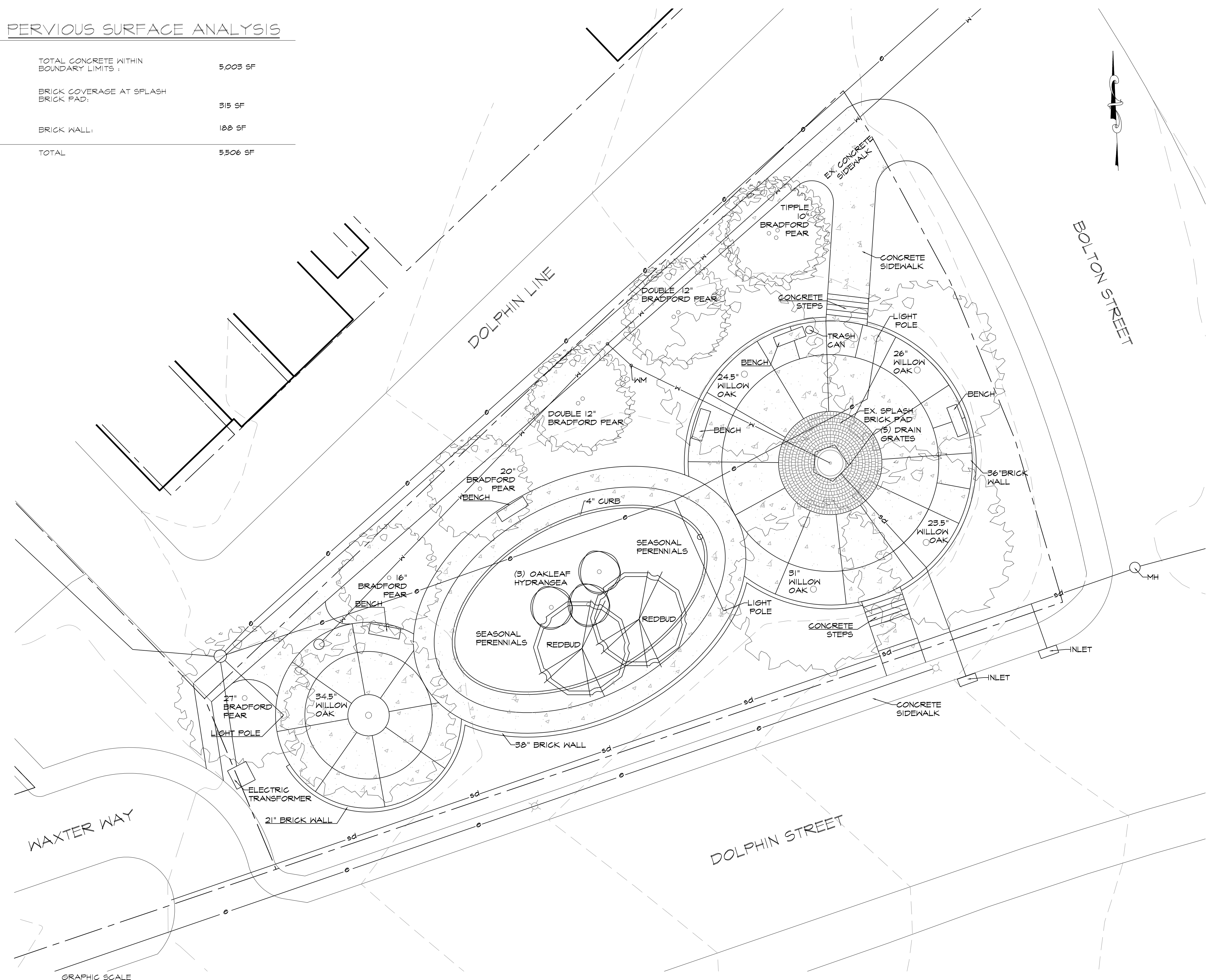


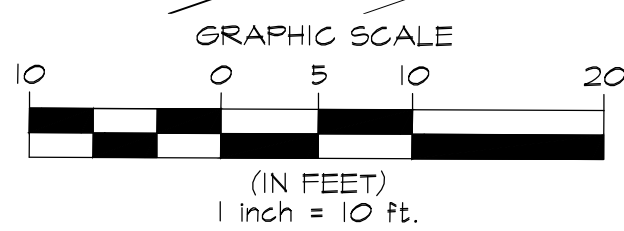
PERVIOUS SURFACE ANALYSIS

| | |
|---|----------|
| TOTAL CONCRETE WITHIN BOUNDARY LIMITS : | 5,003 SF |
| BRICK COVERAGE AT SPLASH BRICK PAD: | 315 SF |
| BRICK WALL: | 188 SF |
| TOTAL | 5,506 SF |



LEGEND

- EX. CONTOURS
- EX. CURB AND GUTTER
- EX. GAS
- EX. ELECTRIC
- EX. STORM DRAIN
- sd EX. SANITARY SEWER
- EX. WATER
- EX. WATER VALVE
- EX. MANHOLE
- EX. CLEANOUT
- EX. LIGHT POLE
- EX. INLET
- EX. TREES



EXISTING CONDITIONS
1" = 10'-0"

EXISTING CONDITION PLAN
FOR
CONTEE PARAGO PARK
AT
280 DOLPHIN STREET
BALTIMORE, MD 21217

PLOTTED: 8/24/15
 FILE: 150101.DWG
 FILE: 150101.PLT